

TRAITS

Weight:

Male: 160lbs

Female: 130 lbs

Height :

Male : 30 inches

Female: 28 inches

Use:

Dairy

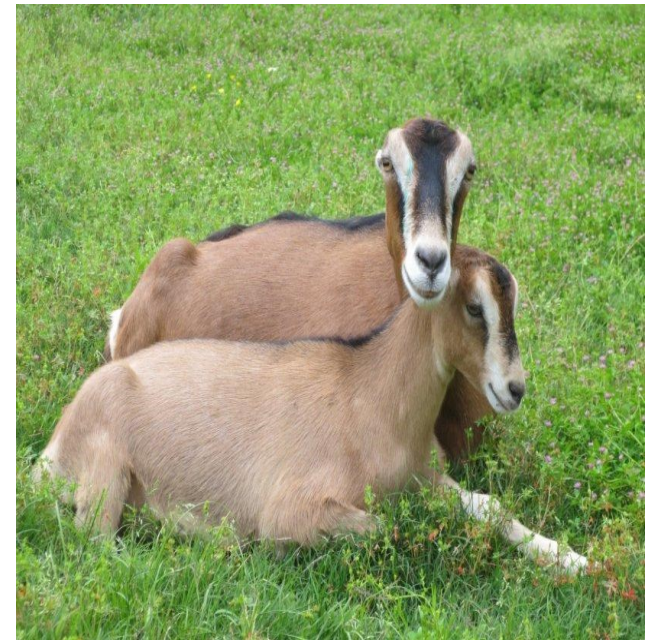
For more in formation please contact
Ph: (876) 983-2281/2267/2842-3
Email:bodleslivestock@moa.gov.jm



Ministry of Agriculture Fisheries And Mining
Bodles Research Station
Old Harbour, P.O.
St. Catherine, Jamaica

LA MANCHA

MILK GOAT



Ministry of Agriculture Fisheries And Mining
Research and Development Division
Bodles Research Station
Old Harbour, P.O.
St. Catherine, Jamaica

HISTORY

- ⇒ La-Mancha originated from America, which was developed in the 1930's
- ⇒ This breed of goat was introduced to Jamaica in the 1980's



CHARACTERISTICS

- ⇒ La-Mancha goat colors include white, cream, various shades of brown, gray or black., often patterned with badger stripes, dairy markings, or pied.
- ⇒ La-Mancha are known for their distinct small or non-existent ears. They may have either a “gopher ear” of maximum 1 inch length, or an “elf ear” with a maximum 2 inch length, with little or no cartilage, or no external ear
- ⇒ Does produce a steady supply of milk with a butterfat range of 3.9%-8%.
- ⇒ La-Mancha are calm, quiet and easy to handle
- ⇒ La-Mancha adapt well to different environments or climates.

PERFORMANCE

- ⇒ The birth weight of male La-Mancha is relatively higher than that of the female
- ⇒ The litter size tends to increase with increasing parity

